

Seal Out Contamination

With Ultra Clean Products!



Ultra Clean Products

Clean and seal out contamination from your hose assemblies like the professionals.

Ultra Clean Products



ARE YOU SEALING OUT CONTAMINATION OR STILL USING CAPS?

Use Our Clean Seal Capsules

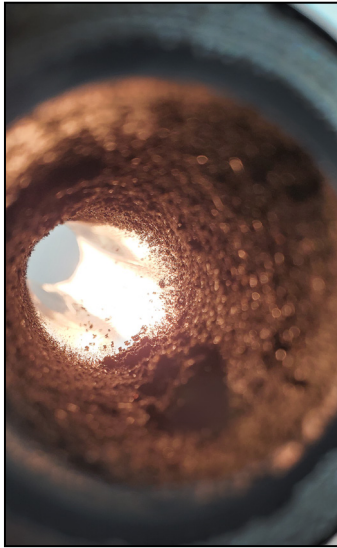
In construction, equipment failure is a no-go. Ultra Clean Technologies steps up with a revolutionary approach to contamination control. The Clean Seal System uses heat shrink technology to tightly seal hose ends with Clean Seal Capsules, thwarting the re-contamination that plagues traditional methods. Ill-fitting caps often leave plastic residue, but our capsules ensure a 100% contaminant-free seal. Not just more effective, Clean Seal Capsules are also cost-efficient and user-friendly.

Our new technology has customers asking the question, what are the benefits of using **Clean Seal Capsules**?

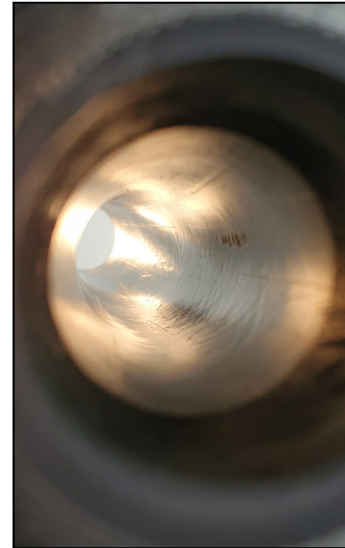
- Fast, clean and easy capsule installation.
- Preserves cleanliness.
- Eliminates excessive cap & plug inventories.
- Just 19 capsules sizes needed for all assemblies.
- Easy to use heat shrink machine or heat shrink gun for low or high volume production.
- Easy, clean pull tab removal.
- Seals straight and elbow fittings.
- Standard yellow color.
- No particulates or sticky residue left behind.
- Shipped pre-stacked to ensure cleanliness on inside.
- Sold in bulk cartons or packaged quantities.

Ultra Clean Products

Clean and seal out contamination from your hose assemblies like the professionals.



Does Your Hose Look Like This After The Cut?

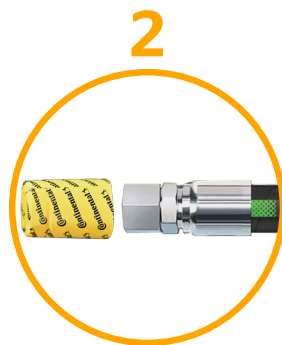


It Can Look Like This With Ultra Clean!

Easy Steps To Keep Your Hose Assemblies Free Of Contamination.



Fire a projectile



Select a clean seal capsule



Heat-shrink



Finished, Cleaned, & Sealed

Ultra Clean Products

Continental is excited to introduce the Ultra Clean Products for the cleaning and sealing of hose assemblies. The Ultra Clean system will remove contamination during or after the fabrication process, to promote a more reliable hydraulic system throughout its operational life.

Ultra Clean Products

Choose the appropriate ultra clean product that best meet your individual requirements.

Bench Mount Launcher, Hand-Held Launchers, and Nozzle Holder



Bench Mount Launcher
P/N: 21187423



1-1/4" Hand Held Launcher
P/N: 21187687



2" Hand Held Launcher
P/N: 21187692



Nozzle Holder
P/N: 21187449

Production Clean Seal System, Heat shrink Gun, and Capsule Dispenser Kit



Production clean seal system
P/N: 21187670



Heat shrink gun and starter kit
P/N: 21187673



Capsule dispenser kit
P/N: 21187678

Projectile Starter Kits, and Projectile Catcher Bucket



1/4 thru 1-1/4" projectile starter kit
P/N: 21187522



1/4 thru 2" projectile starter kit
P/N: 21187523

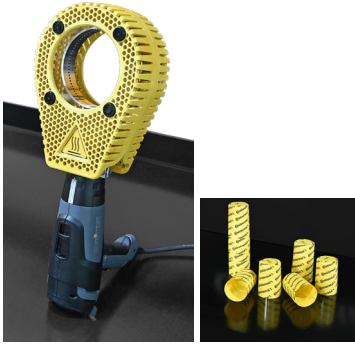


Projectile catcher bucket
P/N: 21187445

Ultra Clean Products

Continental offers Ultra Clean Starter Kits for the shop in a box for the models below.

Ultra Clean (UC) Starter Kits



Heat shrink gun and starter kit



CT-EL-8-DP Kit



Nozzle Holder

Shop In A Box Models: PC125/PC150/PC160i/150HD UC Starter Kit P/N: 21188221



Heat shrink gun and starter kit



CT-CAP Kit







Nozzle Holder

Shop In A Box Models: PC200M/PC200i/PC440i UC Starter Kit P/N: 21188222

Ultra Clean Products

Image	SAP #	Description
	Hand Launchers <ul style="list-style-type: none"> • Full Flow Quick Release Coupling and 360° Rotary Plug for proper air flow and non-fatigue operator use. • Safety Release Bar locks faceplate into a closed position. • Made of precision machined aluminum, and fully anodized for harsh environments and heavy use. • Ideal for production hose, tube shops, mobile hose fabricators and job site applications due to simplistic design, size and portability. 	
	21187683	CT-HL-10-2 KIT
	21187684	CT-HL-25-2 KIT
	21187685	CT-HL-17-2MT KIT
	21187413	CT-CAP KIT
	21187687	CT-EL-8 KIT
	21187415	CT-EL-8-DP KIT
	21187689	CT-EL13MT KIT
	21187690	CT-HL-1-3.5 KIT
	21187691	CT-HL-1-4.5 KIT
	21187692	CT-EL1.25 HAND LAUNCHER
	21187693	CT-HL2 HAND LAUNCHER
	21187694	CT-HL3.5 HAND LAUNCHER
21187695	CT-HL4.5 HAND LAUNCHER	
	Bench Launchers <ul style="list-style-type: none"> • Manual and automated equipment for hose or tube assembly production lines. • Increased production speed. • Reduced cost. • Reduction of unnecessary air consumption. • Easily incorporates into existing production environment. • Easy to operate. • Electronically controlled. 	
	21187423	CT-BM1.25-G3 BENCH LAUNCHER
	21187697	CT-BM-HH BENCH LAUNCHER
	Projectile Verification System <ul style="list-style-type: none"> • PLC/HMI Touchscreen for intuitive navigation and set-up in multiple languages. • (3) Three Cleaning Modes with time-adjustable air blow. • Power cable converts 240V AC (Europe) or 110V AC to 24V DC. • Capable of capturing/transferring data such as projectile counts and faults, via a USB port to ensure no projectile is left inside a cleaned hose or tube. • Remote monitoring. • Green light on Containment Barrel goes on and air blow automatically stops when cleaning process is complete and projectile verified. 	
	21187698	CT-PVS-G4 VERIFICATION
	21187699	CT-HL-PVS VERIFICATION

Image	SAP #	Description
	Carousel AutoLoader <ul style="list-style-type: none"> • Automatic projectile loading, firing, and verification. • Removes internal contamination from hoses, quickly and efficiently in a production environment. • Ideal for high volume production cells making hose assemblies. • Fully integrates into automated tube manufacturing processes. • Verifies projectile has exited hose, tube and entered Containment Barrel along with expelled contamination. • Cleans hoses with an internal diameter of ¼" - 1" (6mm - 25mm). 	
	21187700	CT-CAL-MS CAROUSEL KIT
	Marking System <ul style="list-style-type: none"> • Marking system attaches to front of UC-CAL-G1.5 • Adjustable X and Y axis to precisely place an indicator mark on O.D. of application. • Mark ensures proper stem depth insertion and projectile verification. • May also be used for color-coding purposes such as indication of production years. 	
	21187701	CT-CAL-MARK SYSTEM
	Hand Held Launcher <ul style="list-style-type: none"> • Optional hand held launcher for use when the marking system is disconnected. • Electronic hand held launcher specifically designed for use with UC-CAL-MS. • Standard 6' extension hose/cable provided added mobility, allowing user to easily take a hand held launcher directly to a hose or tube assembly. • Three sizes available to handle various hose I.D. sizes: 1/2", 5/8", 3/4". 	
	21187702	CT-CAL-HH HAND LAUNCHER
	Hopper Boxes <ul style="list-style-type: none"> • Quick hand & clean projectile loading and storage. • Hopper boxes ordered separately based on projectile size (7mm-33mm). • Stainless steel construction. • Static control with built-in air ionization. • Includes safety sensor to stop system and carousel functions until lid is closed. • Laser-marked for easy identification. 	
	21187703	CT-HB-07 HOPPER
	21187704	CT-HB-10 HOPPER
	21187705	CT-HB-12 HOPPER
	21187706	CT-HB-14 HOPPER
	21187707	CT-HB-16 HOPPER
	21187708	CT-HB-18 HOPPER
	21187709	CT-HB-20/22 HOPPER
	21187710	CT-HB-26 HOPPER
	21187711	CT-HB-33 HOPPER

Ultra Clean Products







Image	SAP #	Description
		<p>Adapter & Locking Rings</p> <ul style="list-style-type: none"> • UC-AR1 fits the UC-HL2 Launcher and all nozzle types from 1/8" - 1 1/4". • UC-AR2 fits the UC-HL3.5 Launcher and all nozzle types from 1/8" through 1 1/4". • UC-AR3 fits the UC-HL3.5 Launcher and all nozzle types from 1 1/2" through 2". • UC-LR fits the UC-HL3.5 & UC-HL4.5 Launchers and the AR2, AR3 & UC-U55/90 nozzles.
	21187712	CT-AR1 ADAPTER RING
	21187713	CT-AR2 ADAPTER RING
	21187714	CT-AR3 ADAPTER RING
	21187715	CT-LR ADAPTER RING
		<p>Containment Barrel</p> <ul style="list-style-type: none"> • Catches and verifies that projectile and contamination have been expelled. • Includes a wheeled dolly for ease of use. • Large filter allows compressed air to escape while retaining contamination residue. • Built-in sight gauge indicates when system needs emptying. • Indicator lights signify at which stage system is operating. <p><i>Green</i> = ready to launch projectile and/or has verified a caught projectile.</p> <p><i>Yellow blinking</i> = projectile has been fired and is in process in hose or tube.</p> <p><i>Red</i> = projectile not verified and may still be in the hose or launcher.</p>
	21187716	CT-CB-PS BARREL
	21187717	CT-CB-WO BARREL
		<p>Projectile Catcher Bucket</p> <ul style="list-style-type: none"> • Prevent injury to yourself, a customer or an innocent bystander should contamination (such as steel slivers, or fragments of wire) be forcefully propelled, along with the projectile from inside the hose, tube or pipe. • Allows you to catch and visually ascertain the contamination itself, expelled by the projectile from the hose, tube or pipe. • Ascertain internal condition of the hose, tube or pipe by inspecting spent projectiles. • Maintain a clean and professional work space. • Saves time, energy and cleaning costs by eliminating mess. • Locate in clean, practical position.
	21187445	CT-PC BUCKET
		<p>Quick Connects</p> <ul style="list-style-type: none"> • Allows for 360° swivelling! • Fits at 45° angle to reduce operator fatigue • Size: 1/4" MNPT by Male Quick Connect
	21187719	CT-QRC-RP ROTARY PLUG
		<ul style="list-style-type: none"> • Excellent general purpose coupling for connecting factory air supply to pneumatic tools • Size: 1/2" hose barb by Female quick-disconnect
	21187720	CT-QRC-C QUICK RELEASE

Image	SAP #	Description
		<p>Ultra Clean Carrying Case</p> <p>Mobile Carrying Case for Ultra Clean Hardware. Pick-and-Pluck foam comes standard with the case. Foam inserts for our launchers and nozzles are available upon request.</p>
	21187721	CT-CC-CTL CARRY CASE
		<p>Nozzle Holder</p> <p>A great alternative to leaving your nozzles in the carry case. It can be attached to a workbench and offers these additional advantages:</p> <ul style="list-style-type: none"> • Easy access during operation. • Keeps nozzles and system visible, reminding workers of cleaning procedures. • Becomes a promotional feature for customers. • Accommodates 1/4" through 2" nozzles.
	21187449	CT-NH25 NOZZLE HOLDER
		<p>Launcher Stand</p> <p>The launcher stand is an essential piece of equipment that offers a permanent storage place for hand-held launchers when not in use.</p> <ul style="list-style-type: none"> • Offers an anchor in a situation where the operator needs both hands to lift the hose to the nozzle.
	21187723	CT-SLAUNCHER STAND
		<p>Marking Systems Accessories</p> <p>Markers for UC-CAL-MS Marking System.</p> <ul style="list-style-type: none"> • High quality paint-like markers. • Available in four bright colors that can be easily seen on hoses. • Wear, fade and bleed-resistant. • Tight, secure, color-coded caps.
	21187724	CT-MARK-BLUE
	21187725	CT-MARK-RED
	21187726	CT-MARK-WHITE
	21187727	CT-MARK-YELLOW
	21187728	CT-MARK-TIP
	21187729	CT-MARK-HOLDER
		<p>Hose Nozzles</p> <p>The hose nozzle is inserted into the ID of the hose. Hose nozzles also work on pipe, heavy walled tubing and many coupling configurations. It is our most popular nozzle. Hose nozzles have the "UC-H" designation and are blue in color for easy identification.</p>
	21187730	CT-H05 NOZZLE
	21187731	CT-H06 NOZZLE
	21187732	CT-H08 NOZZLE
	21187733	CT-H10 NOZZLE
	21187734	CT-H13 NOZZLE
	21187735	CT-H16 NOZZLE

Ultra Clean Products








Image	SAP #	Description
	Hose Nozzles The hose nozzle is inserted into the ID of the hose. Hose nozzles also work on pipe, heavy walled tubing and many coupling configurations. It is our most popular nozzle. Hose nozzles have the "UC-H" designation and are blue in color for easy identification.	
	21187736	CT-H19 NOZZLE
	21187737	CT-H25 NOZZLE
	21187738	CT-H32 NOZZLE
	21187739	CT-H38 NOZZLE
	21187740	CT-H50 NOZZLE
	Tube Nozzles (Nominal Inch) Nominal inch tube nozzles have a stop on the inside that forms an airtight seal when the tube is fully inserted into the nozzle. Nominal inch tube nozzles are white in color and designated with a "UC-T" in the part number. Some "UC-T" nozzles may also be designated for JIC use as reflected in the part number.	
	21187741	CT-T03 NOZZLE
	21187742	CT-J06 NOZZLE
	21187743	CT-T06 NOZZLE
	21187744	CT-T08 NOZZLE
	21187745	CT-J10 NOZZLE
	21187746	CT-T10 NOZZLE
	21187747	CT-J13/T13 NOZZLE
	21187748	CT-J16/T16 NOZZLE
	21187749	CT-J19/T19 NOZZLE
	21187750	CT-J25/T22 NOZZLE
	21187751	CT-T32 NOZZLE
	21187752	CT-J32/T25 NOZZLE
	21187753	CT-J38/T38 NOZZLE
	21187754	CT-J50/T50 NOZZLE
	21187755	CT-4FFORX NOZZLE
	Universal Nozzle UC-U55/90: The Universal Nozzle is similar to our hose style nozzle. It has a size range 2½" - 3½" (55mm - 90mm). The Universal Nozzle can be cut off in 10mm increments to suit your application.	
	21187756	CT-U55/90 UNIVERSAL NOZZLE
	Aluminum Locking Nozzle CT-4.5LN: This nozzle is supplied with the UC-HL4.5 Launcher for 3½" - 4½" (90mm - 115mm) applications.	
	21187757	CT-4.5LN LOCKING NOZZLE

Image	SAP #	Description
	Aluminum Nozzles	
	21187758	CT-AH06 ALUMINUM NOZZLE
	21187759	CT-AH08 ALUMINUM NOZZLE
	21187760	CT-AH10 ALUMINUM NOZZLE
	21187761	CT-AH13 ALUMINUM NOZZLE
	21187762	CT-AH16 ALUMINUM NOZZLE
	21187763	CT-AH19 ALUMINUM NOZZLE
	21187764	CT-AH25 ALUMINUM NOZZLE
	21187765	CT-AH32 ALUMINUM NOZZLE
	21187766	CT-AH38 ALUMINUM NOZZLE
	21187767	CT-AH50 ALUMINUM NOZZLE
	Production Hose Nozzles (Aluminum) Production Hose Nozzles are aluminum with a hard coat blue anodized finish. They are available for hose sizes ¼" (6mm) through 1¼" (32mm). The primary application is production hose assembly cleaning when using a CT-BM1.25-G3 Bench Mount Launcher or the CT-CAL-MS Carousel Auto Loader.	
	21187768	CT-AH05-BLUE ALUMINUM NOZZLE
	21187769	CT-AH06-BLUE ALUMINUM NOZZLE
	21187770	CT-AH08-BLUE ALUMINUM NOZZLE
	21187771	CT-AH10-BLUE ALUMINUM NOZZLE
	21187772	CT-AH13-BLUE ALUMINUM NOZZLE
	21187773	CT-AH16-BLUE ALUMINUM NOZZLE
	21187774	CT-AH19-BLUE ALUMINUM NOZZLE
	21187775	CT-AH25-BLUE ALUMINUM NOZZLE
	21187776	CT-AH32-BLUE ALUMINUM NOZZLE
	21187777	CT-AH-KIT-BLUE ALUMINUM NOZZLE
	Tube Nozzles (Metric) Metric tube nozzles have a stop on the inside that forms an airtight seal when the tube is fully inserted into the nozzle. Metric tube nozzles are designed to match metric tubing, and are similarly based on outside diameter (OD) x wall thickness. Metric tube nozzle designations utilize the largest wall thickness for the given OD, but fit all smaller wall thicknesses as well. Metric tube nozzles are grey in color.	
	21187778	CT-6X1.5 TUBE NOZZLE
	21187779	CT-8X1.5 TUBE NOZZLE
	21187780	CT-10X1.5 TUBE NOZZLE

Ultra Clean Products




Image	SAP #	Description
	21187781	CT-12X2.0 TUBE NOZZLE
	21187782	CT-14X2.0 TUBE NOZZLE
	21187783	CT-15X2.0 TUBE NOZZLE
	21187784	CT-16X2.5 TUBE NOZZLE
	21187785	CT-18X2.5 TUBE NOZZLE
	21187786	CT-20X3.0 TUBE NOZZLE
	21187787	CT-22X2.0 TUBE NOZZLE
	21187788	CT-25X3.0 TUBE NOZZLE
	21187789	CT-28X2.5 TUBE NOZZLE
	21187790	CT-30X4.0 TUBE NOZZLE
	21187791	CT-35X3.0 TUBE NOZZLE
	21187792	CT-38X5.0 TUBE NOZZLE
	21187793	CT-42X3.0 TUBE NOZZLE
	21187794	CT-50X6.0 TUBE NOZZLE
	CT-P1 Projectile Kit Includes: 11 bags of Ultra Clean projectiles for cleaning out hose, tube and pipe applications up to 1-1/4" ID.	
	21187522	CT-P1 PROJECTILE KIT
	CT-P2 Projectile Kit Includes: 13 bags of Ultra Clean Projectiles for cleaning out hose, tube and pipe applications up to 1/4" to 2" ID.	
	21187523	CT-P2 PROJECTILE KIT
	Ultra Clean Projectiles Universal application for cleaning hose, tube, pipe and assemblies. Removes fine particles of loose contamination and can also be used for product purging. Size range: 2mm - 95mm.	
	21187797	CT02 PROJECTILE
	21187798	CT03 PROJECTILE
	21187799	CT04 PROJECTILE
	21187800	CT05 PROJECTILE
	21187528	CT06 PROJECTILE
	21187529	CT07 PROJECTILE
	21187530	CT08 PROJECTILE
	21187531	CT10 PROJECTILE
	21187532	CT12 PROJECTILE
	21187533	CT14 PROJECTILE
	21187534	CT16 PROJECTILE
	21187535	CT18 PROJECTILE
	21187536	CT20 PROJECTILE
	21187537	CT22 PROJECTILE
	21187538	CT24 PROJECTILE

Image	SAP #	Description
	21187539	CT26 PROJECTILE
	21187540	CT28 PROJECTILE
	21187541	CT30 PROJECTILE
	21187542	CT33 PROJECTILE
	21187543	CT36 PROJECTILE
	21187544	CT40 PROJECTILE
	21187545	CT45 PROJECTILE
	21187546	CT50 PROJECTILE
	21187547	CT55 PROJECTILE
	21187821	CT60 PROJECTILE
	21187822	CT65 PROJECTILE
	21187823	CT70 PROJECTILE
	21187824	CT75 PROJECTILE
	21187825	CT80 PROJECTILE
	21187826	CT85 PROJECTILE
	21187827	CT90 PROJECTILE
	21187828	CT95 PROJECTILE
	21187829	CT100 PROJECTILE
	21187830	CT110 PROJECTILE
	21187831	CT120 PROJECTILE
	21187832	CT130 PROJECTILE
	21187833	CT140 PROJECTILE
	21187834	CT150 PROJECTILE
	21187835	CT02B PROJECTILE
	21187836	CT03B PROJECTILE
	21187837	CT04B PROJECTILE
	21187838	CT05B PROJECTILE
	21187839	CT06B PROJECTILE
	21187840	CT07B PROJECTILE
	21187841	CT08B PROJECTILE
	21187842	CT10B PROJECTILE
	21187843	CT12B PROJECTILE
	21187844	CT14B PROJECTILE
	21187845	CT16B PROJECTILE
	21187846	CT18B PROJECTILE
	21187847	CT20B PROJECTILE
	21187848	CT22B PROJECTILE
	21187849	CT24B PROJECTILE
	21187850	CT26B PROJECTILE
	21187851	CT28B PROJECTILE

Ultra Clean Products

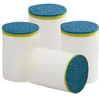
Image	SAP #	Description
	21187852	CT30B PROJECTILE
	21187853	CT33B PROJECTILE
	21187854	CT36B PROJECTILE
	21187855	CT40B PROJECTILE
	21187856	CT45B PROJECTILE
	21187857	CT50B PROJECTILE
	21187858	CT55B PROJECTILE
	21187859	CT60B PROJECTILE
	21187860	CT65B PROJECTILE
	21187861	CT70B PROJECTILE
	21187862	CT75B PROJECTILE
	21187863	CT80B PROJECTILE
	21187864	CT85B PROJECTILE
	21187865	CT90B PROJECTILE
	21187866	CT95B PROJECTILE
	21187867	CT100B PROJECTILE
	21187868	CT110B PROJECTILE
	21187869	CT120B PROJECTILE
	21187870	CT130B PROJECTILE
	21187871	CT140B PROJECTILE
	21187872	CT150B PROJECTILE
	<p>Abrasive Projectiles For use with tubes or pipes to loosen mild to medium amounts of contamination, surface rust or scale build-up. Always follow-up with an Ultra Clean projectile to clear away loosened contaminants and verify cleanliness. Can be used multiple times. Size range: 6mm - 120mm.</p>	
	21187873	CT-A06 ABRASIVE PROJECTILE
	21187874	CT-A07 ABRASIVE PROJECTILE
	21187875	CT-A10 ABRASIVE PROJECTILE
	21187876	CT-A12 ABRASIVE PROJECTILE
	21187877	CT-A14 ABRASIVE PROJECTILE
	21187878	CT-A16 ABRASIVE PROJECTILE
	21187879	CT-A18 ABRASIVE PROJECTILE
	21187880	CT-A20 ABRASIVE PROJECTILE
	21187881	CT-A22 ABRASIVE PROJECTILE
	21187882	CT-A24 ABRASIVE PROJECTILE
	21187883	CT-A26 ABRASIVE PROJECTILE
	21187884	CT-A28 ABRASIVE PROJECTILE
	21187885	CT-A30 ABRASIVE PROJECTILE
	21187886	CT-A33 ABRASIVE PROJECTILE

Image	SAP #	Description
	21187887	CT-A36 ABRASIVE PROJECTILE
	21187888	CT-A40 ABRASIVE PROJECTILE
	21187889	CT-A45 ABRASIVE PROJECTILE
	21187890	CT-A50 ABRASIVE PROJECTILE
	21187891	CT-A55 ABRASIVE PROJECTILE
	21187892	CT-A60 ABRASIVE PROJECTILE
	21187893	CT-A65 ABRASIVE PROJECTILE
	21187894	CT-A70 ABRASIVE PROJECTILE
	21187895	CT-A75 ABRASIVE PROJECTILE
	21187896	CT-A80 ABRASIVE PROJECTILE
	21187897	CT-A85 ABRASIVE PROJECTILE
	21187898	CT-A90 ABRASIVE PROJECTILE
	21187899	CT-A95 ABRASIVE PROJECTILE
	21187900	CT-A100 ABRASIVE PROJECTILE
	21187901	CT-A110 ABRASIVE PROJECTILE
	21187902	CT-A120 ABRASIVE PROJECTILE
	<p>CT-CSC-1424 through CT-CSC-8060 Clean Seal Capsules</p> <ul style="list-style-type: none"> • Preserves cleanliness. • Eliminates cap inventory hassles. • Fast, clean, and easy capsule installation. • Easy, pull-tab removal. • No particulates or sticky residue left behind. • Just 19 capsule sizes needed for all assemblies. • Universal, durable, secure fit up to 3" (78mm). • Easy to use heat shrink machine or heat shrink gun for low or high volume production. • Seals straight and elbow couplings - shorter capsules available for angled / elbow (i.e.: 45° and 90°) fittings. • Sold in bulk cartons or packaged quantities. • Shipped pre-stacked to ensure cleanliness on inside. • Recyclable through your local recycle program. 	
	21187903	CT-CSC-1424B CLEAN SEAL
	21187904	CT-CSC-1624B CLEAN SEAL
	21187905	CT-CSC-1824B CLEAN SEAL
	21187906	CT-CSC-2023B CLEAN SEAL
	21187907	CT-CSC-2030B CLEAN SEAL
	21187908	CT-CSC-2224B CLEAN SEAL
	21187909	CT-CSC-2527B CLEAN SEAL
	21187910	CT-CSC-2540B CLEAN SEAL
	21187911	CT-CSC-2840B CLEAN SEAL
	21187912	CT-CSC-3133B CLEAN SEAL
	21187913	CT-CSC-3140B CLEAN SEAL
	21187914	CT-CSC-3440B CLEAN SEAL
	21187915	CT-CSC-3840B CLEAN SEAL

Ultra Clean Products

Image	SAP #	Description
	21187916	CT-CSC-4345B CLEAN SEAL
	21187917	CT-CSC-4650B CLEAN SEAL
	21187918	CT-CSC-5260B CLEAN SEAL
	21187919	CT-CSC-5860B CLEAN SEAL
	21187920	CT-CSC-6760B CLEAN SEAL
	21187921	CT-CSC-8060B CLEAN SEAL
	21187649	CT-CSC-1424P CLEAN SEAL
	21187650	CT-CSC-1624P CLEAN SEAL
	21187651	CT-CSC-1824P CLEAN SEAL
	21187652	CT-CSC-2023P CLEAN SEAL
	21187653	CT-CSC-2030P CLEAN SEAL
	21187654	CT-CSC-2224P CLEAN SEAL
	21187655	CT-CSC-2527P CLEAN SEAL
	21187656	CT-CSC-2540P CLEAN SEAL
	21187657	CT-CSC-2840P CLEAN SEAL
	21187658	CT-CSC-3133P CLEAN SEAL
	21187659	CT-CSC-3140P CLEAN SEAL
	21187660	CT-CSC-3440P CLEAN SEAL
	21187661	CT-CSC-3840P CLEAN SEAL
	21187662	CT-CSC-4345P CLEAN SEAL
	21187663	CT-CSC-4650P CLEAN SEAL
	21187664	CT-CSC-5260P CLEAN SEAL
	21187665	CT-CSC-5860P CLEAN SEAL
	21187666	CT-CSC-6760P CLEAN SEAL
	21187667	CT-CSC-8060P CLEAN SEAL
	21187941	CT-CSC1 CAPSULE KIT
	21187942	CT-CSC2 CAPSULE KIT
	CT-CSS-230V-AK The Clean Seal System utilizes heat shrink technology to encapsulate the end of a hose or tube assembly with a Clean Seal Capsule. This eliminates possible re-contamination that is problematic with traditional capping and plugging methods.	
	21187670 CT-CSS-230V-AK PRODUCTION KIT	
	CT-CSS-120V-AK A Cradle holds and locks the 120V heat gun into place for bench top shrinking of capsules. The heat gun can be easily removed from the cradle for remote capsule shrinking. Magnetic Puck holds the Capsule onto the fitting for a perfect seal during the shrinking process. Magnetic Puck pulls the swivel nut forward on 90 and 45 degree fittings for easy insertion into the Air Knife for capsule shrinking.	
	21187944 CT-CSS-120V-AK HEAT SHRINK GUN KIT	

Image	SAP #	Description
	CT-HL1920E Economy Heat Gun This Heat Shrink Gun is an industrial, hand-held, portable heat gun that has a temperature range of 120° F (49°C) to 1100° F (593°C) and a built-in cool-down switch. Designed for the occasional user as an economical solution for sealing capsules onto assemblies.	
	21187945 CT-HL1920E ECONOMY HEAT GUN	
	CT-HL1920HK Economy Heat Gun Kit Heat Shrink Gun is an industrial, hand-held, portable heat gun that has a temperature range of 120° F (49°C) to 1100° F (593°C) and a built-in cool-down switch. Designed for the occasional user as an economical solution for sealing capsules onto assemblies. Heat gun can be used for multiple industrial applications Heat Diffuser is made of durable aluminum construction comes with standard capsules for shrinking most assemblies up to 1.73" (44mm) OD	
	21187673 CT-HL1920HK ECONOMY HEAT GUN KIT	
	Air Knife w/Heat Guard Air knife has heat guard and large 110mm center opening accessible from either side.	
	21187947 CT-1.5-AK AIR KNIFE	
	21187948 CT-2.0-AK AIR KNIFE	
	Magnetic Pucks Magnetic Puck pulls the swivel nut forward on 90° and 45° fittings for easy insertion into the Air Knife for capsule shrinking.	
	21187949 CT-SMALL MAGNETIC PUCK	
	21187950 CT-LARGE MAGNETIC PUCK	
	Capsule Dispenser Stand The Capsule Dispenser Stand easily stores and dispenses Clean Seal Capsules. Dispensing Tubes are held in place with a hook and groove system to enable easy and flexible positioning. A strong magnetic strip holds the dispenser tubes firmly in place.	
	21187678 CT-CD-DK DISPENSER KIT	
	21187952 CT-CDS CAPSULE STAND	
	LNYD Wand LAYNARD & Chart	
	21187953 CT-CDS-LNYD WAND LAYNARD & CHART	
	Removal Wand The Ultra Clean Capsule Dispenser Stand comes with a useful loading wand to help load the initial capsules into the dispenser.	
	21187954 CT-CD REMOVAL WAND	
	Chart With Grommet A laminated sizing chart with silhouettes will also be provided to help assist the operator to find the proper Clean Seal Capsule size for each type of fitting they are seeking to seal.	

Ultra Clean Products



Image	SAP #	Description
	Ultra Clean Projectiles Universal application for cleaning hose, tube, pipe and assemblies. Removes fine particles of loose contamination and can also be used for product purging. Size range: 2mm - 95mm.	
	21187528	CT06 PROJECTILE
	21187529	CT07 PROJECTILE
	21187530	CT08 PROJECTILE
	21187531	CT10 PROJECTILE
	21187532	CT12 PROJECTILE
	21187533	CT14 PROJECTILE
	21187534	CT16 PROJECTILE
	21187535	CT18 PROJECTILE
	21187536	CT20 PROJECTILE
	21187537	CT22 PROJECTILE
	21187538	CT24 PROJECTILE
	21187539	CT26 PROJECTILE
	21187540	CT28 PROJECTILE
	21187541	CT30 PROJECTILE
	21187542	CT33 PROJECTILE
	21187543	CT36 PROJECTILE
	21187544	CT40 PROJECTILE
	21187545	CT45 PROJECTILE
	21187546	CT50 PROJECTILE
	21187547	CT55 PROJECTILE
	CT-CSC-1424 through CT-CSC-8060 Clean Seal Capsules <ul style="list-style-type: none"> • Preserves cleanliness. • Eliminates cap inventory hassles. • Fast, clean, and easy capsule installation. • Easy, pull-tab removal. • No particulates or sticky residue left behind. • Just 19 capsule sizes needed for all assemblies. • Universal, durable, secure fit up to 3" (78mm). • Easy to use heat shrink machine or heat shrink gun for low or high volume production. • Seals straight and elbow couplings - shorter capsules available for angled / elbow (i.e.: 45° and 90°) fittings. • Sold in bulk cartons or packaged quantities. • Shipped pre-stacked to ensure cleanliness on inside. • Recyclable through your local recycle program. 	
	21187649	CT-CSC-1424P CLEAN SEAL
	21187650	CT-CSC-1624P CLEAN SEAL
	21187651	CT-CSC-1824P CLEAN SEAL
	21187652	CT-CSC-2023P CLEAN SEAL
	21187653	CT-CSC-2030P CLEAN SEAL
	21187654	CT-CSC-2224P CLEAN SEAL

Image	SAP #	Description
	21187655	CT-CSC-2527P CLEAN SEAL
	21187656	CT-CSC-2540P CLEAN SEAL
	21187657	CT-CSC-2840P CLEAN SEAL
	21187658	CT-CSC-3133P CLEAN SEAL
	21187659	CT-CSC-3140P CLEAN SEAL
	21187660	CT-CSC-3440P CLEAN SEAL
	21187661	CT-CSC-3840P CLEAN SEAL
	21187662	CT-CSC-4345P CLEAN SEAL
	21187663	CT-CSC-4650P CLEAN SEAL
	21187664	CT-CSC-5260P CLEAN SEAL
	21187665	CT-CSC-5860P CLEAN SEAL
	21187666	CT-CSC-6760P CLEAN SEAL
	21187667	CT-CSC-8060P CLEAN SEAL

FHS - Fluid Handling Solution

Market segment

Hydraulic Hose

Contact

Continental

703 S. Cleveland Massillon Road

Fairlawn, OH 44333-3023 U.S.A.

1-800-235-4632

www.continental-industry.com

Your local contact

www.contitech.de/contactlocator

Canada

1-888-275-4397

Mexico

1-800-439-7373



The content of this publication is not legally binding and is provided as information only. The trademarks displayed in this publication are the property of Continental AG and/or its affiliates. Copyright © 2022 ContiTech AG. All rights reserved. For complete information go to: www.continental-industry.com/disci_en